



# PD&E STUDY

SR 9/I-95 FROM SOUTH OF  
SR 870/COMMERCIAL BOULEVARD  
TO NORTH OF CYPRESS CREEK ROAD  
FM # 435808-1-22-02  
ETDM 14222



## WELCOME TO THE KICK-OFF MEETING

May 24, 2016

1 PLANNING

2 PROJECT DEVELOPMENT  
AND ENVIRONMENT  
(PD&E) STUDY



3 DESIGN

4 RIGHT OF WAY  
ACQUISITION  
(if needed)

5 CONSTRUCTION

6 MAINTENANCE

# STEPS TO IMPLEMENTATION

## Why it's done

- Evaluate project feasibility and potential environmental impacts (natural, physical, socio-cultural)
- Comply with federal and state environmental laws
- Required to secure federal regulatory approval

## What it Involves

- Conducting preliminary engineering
- Evaluating options to avoid, minimize, or mitigate potential environmental impacts
- Coordinating with federal, state and local agencies
- Engaging the public in project development

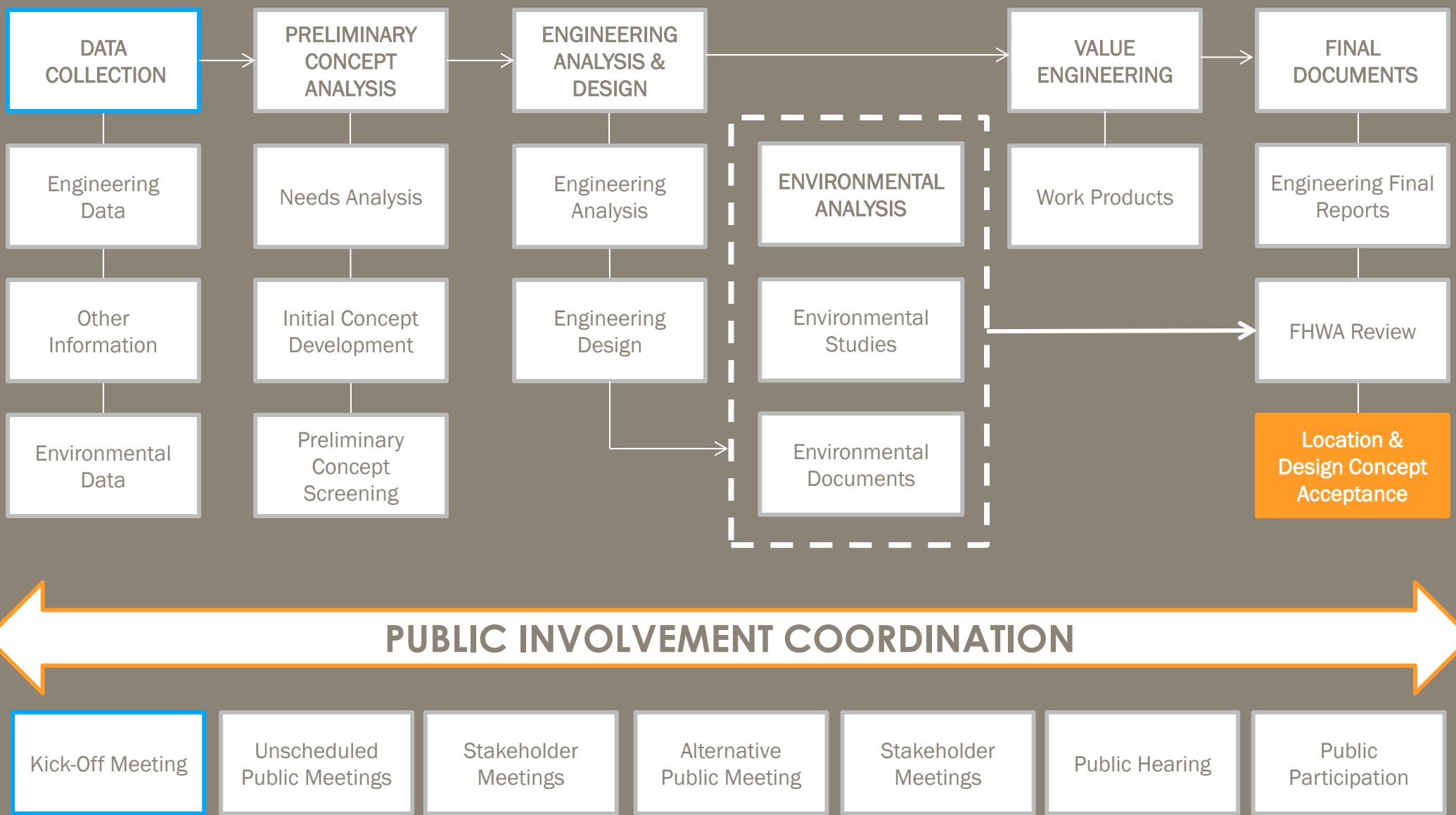
### PD&E STUDY

SR 9/I-95 FROM SOUTH OF  
SR 870/COMMERCIAL BOULEVARD TO NORTH OF CYPRESS CREEK ROAD  
FM# 435808-1-22-02 / ETDM 14222



# National Environmental Policy Act (NEPA) **PROCESS**

## STUDY WORK TASKS



## PROJECT BACKGROUND AND GOALS

PROJECT LOCATION

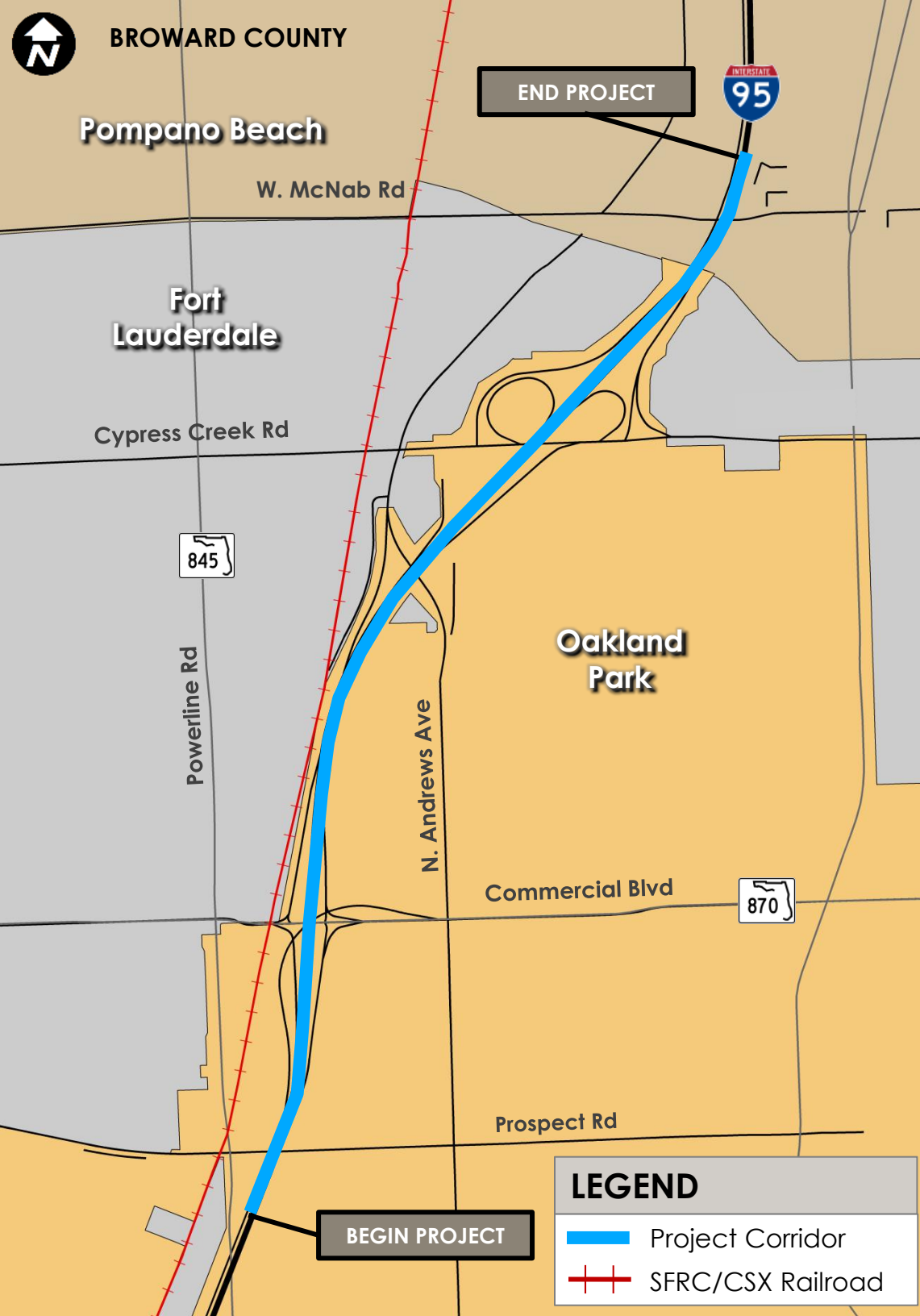
STRATEGIC INTERMODAL SYSTEM

PURPOSE AND NEED

TRAFFIC AND SAFETY

RELATED PROJECTS AND PLANNING EFFORTS

UPTOWN URBAN VILLAGE



# PROJECT LOCATION

- **PD&E Study Limits (Approximately 2 miles)**
  - South of Commercial Boulevard to North of Cypress Creek Road
- **3 Cities:**
  - Oakland Park
  - Fort Lauderdale
  - Pompano Beach
- **Strategic Intermodal System (SIS) and National Highway System (NHS) Facility**
- **Hurricane Evacuation Route**

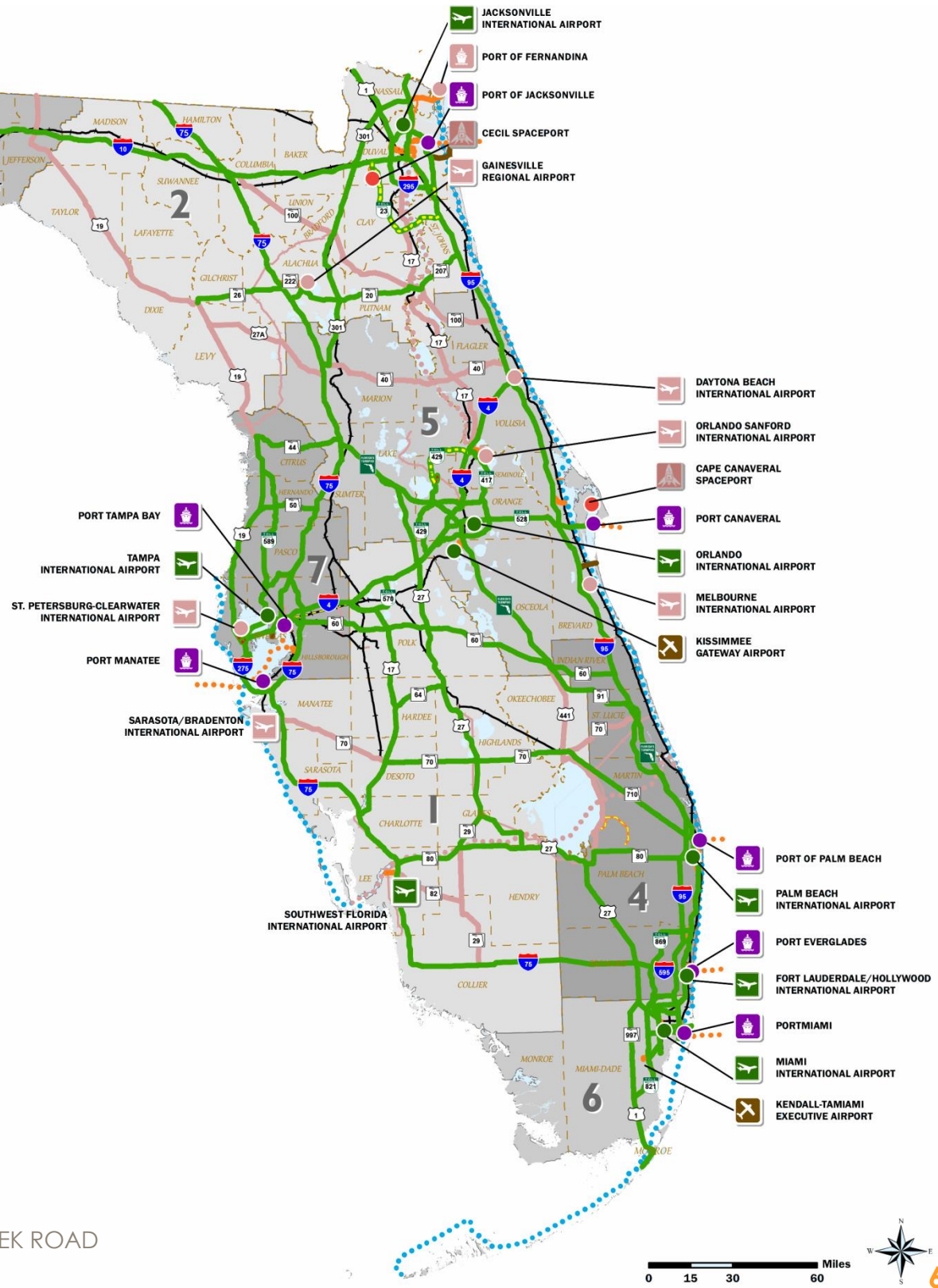
## PD&E STUDY

SR 9/I-95 FROM SOUTH OF  
SR 870/COMMERCIAL BOULEVARD TO NORTH OF  
CYPRESS CREEK ROAD  
FM# 435808-1-22-02 / ETDM 14222

# STRATEGIC INTERMODAL SYSTEM

I-95 is a Strategic Intermodal System (SIS) facility

- Statewide network of high priority transportation facilities such as: airports, seaports, rail corridors and highways
- Primary means for moving people and goods
- Supporting interregional, interstate and international trips





# PURPOSE AND NEED

## PD&E STUDY

SR 9/I-95 FROM SOUTH OF  
SR 870/COMMERCIAL BOULEVARD  
TO NORTH OF CYPRESS CREEK ROAD  
FM# 435808-1-22-02 / ETDM 14222

## PRIMARY PURPOSE AND NEED

- Improve capacity
- Improve traffic operations
- Improve safety

## SECONDARY CONSIDERATIONS

- Improve system linkage
- Accommodate transportation demand
- Accommodate social demands and economic development
- Enhance emergency evacuation and response times

# TRAFFIC AND SAFETY

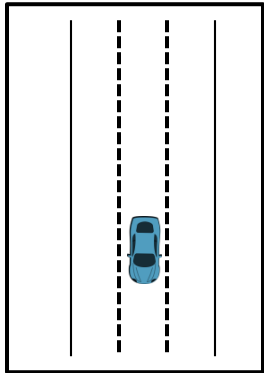
## IMPROVE CAPACITY AND TRAFFIC OPERATIONS

- I-95 within the project limits operates at Level of Service (LOS) F
- Commercial Boulevard operates at LOS E east of I-95 and LOS F west of I-95
- Cypress Creek operates at LOS E on both sides of I-95
- I-95 Express Phase 3 improvements will help maintain or slightly improve the I-95 corridor by providing two Express Lanes in each direction

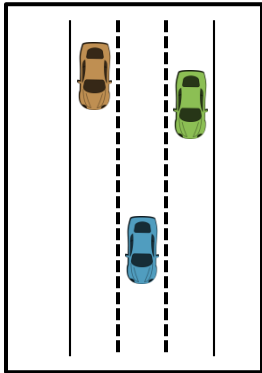
## IMPROVE SAFETY

- Short weave distance between I-95 on-ramps
- Improve weave distance and decision time for drivers merging between on-ramps and I-95 mainline traffic
- Pedestrian Safety

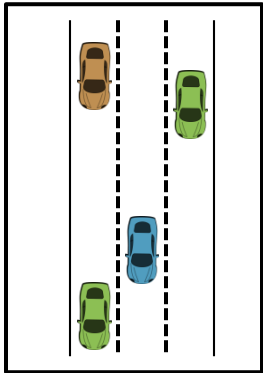
LEVEL-OF-SERVICE	TRAFFIC CONDITION
A	Free Flow Traffic
B	Reasonably Free Flow
C	Stable Flow
D	Approaching Unstable Flow
E	Restricted Flow
F	Almost Non-Existnt



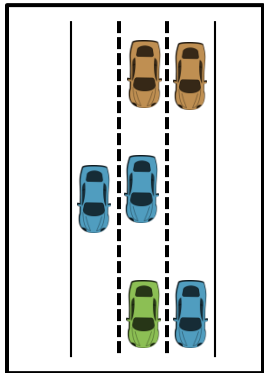
LEVEL OF SERVICE A



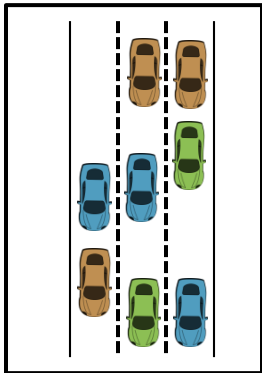
LEVEL OF SERVICE B



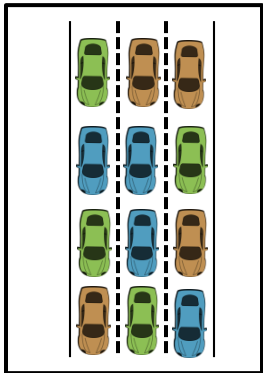
LEVEL OF SERVICE C



LEVEL OF SERVICE D



LEVEL OF SERVICE E



LEVEL OF SERVICE F



# RELATED PROJECTS AND PLANNING EFFORTS

## PD&E STUDY

SR-9/I-95 FROM SOUTH OF  
SR-870/COMMERCIAL BOULEVARD  
TO NORTH OF CYPRESS CREEK ROAD  
FM# 435808-1-22-02 / ETDM 14222

## TRANSPORTATION

- I-95 Express Phase 3
- I-95 Transportation Alternatives Study
- I-95 Interchange Concept Development
  - I-95 at Cypress Creek Road
  - I-95 at Commercial Blvd
- Tri-Rail Coastal Link Corridor
- Cypress Creek Mobility Hub Master Plan
- Broward County Transit Development Plan
- Broward Metropolitan Planning Organization (MPO) 2040 Long Range Transportation Plan (LRTP)
- Broward MPO's Transportation Improvement Plan (TIP)
- Cypress Creek Interchange Area Redevelopment Impacts – a “Pre-PD&E” effort

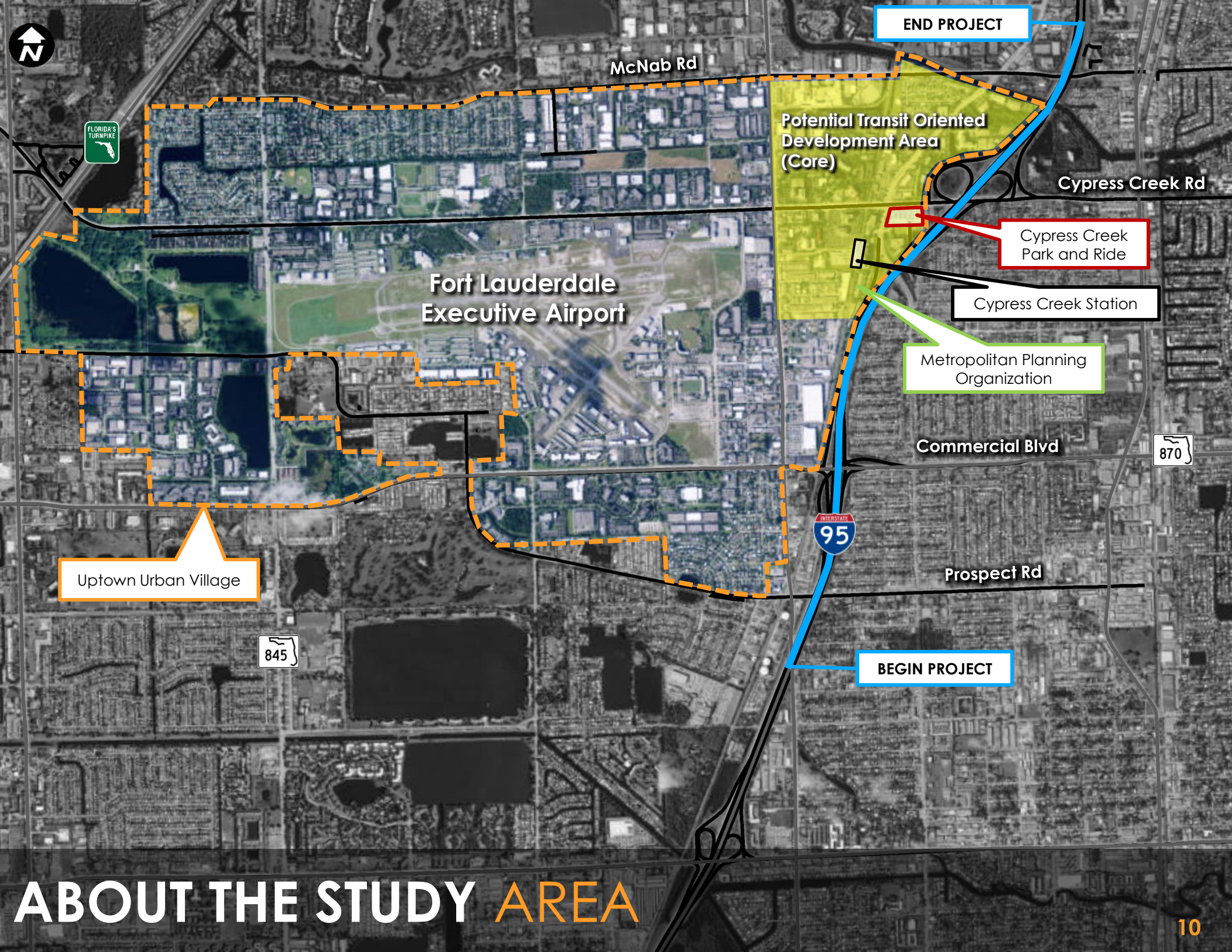


## LAND USE/PLANNING

- Comprehensive Plans
  - City of Fort Lauderdale
  - City of Oakland Park
  - Broward County
- City of Fort Lauderdale Future Land Use Plan
- Fort Lauderdale Executive Airport (FXE) Master Plan
- Fast Forward Fort Lauderdale
- City of Fort Lauderdale Connecting the Blocks
- Seven50 Prosperity Plan
- Broward County Potential Greenway System
- Urban Land Institute Technical Assistance Panels (TAP) Report (The Uptown Urban Village)







END PROJECT

McNab Rd

Potential Transit Oriented  
Development Area  
(Core)

Cypress Creek Rd

Cypress Creek  
Park and Ride

Cypress Creek Station

Metropolitan Planning  
Organization

Commercial Blvd

870

95

Prospect Rd

BEGIN PROJECT

Uptown Urban Village

845

Fort Lauderdale  
Executive Airport

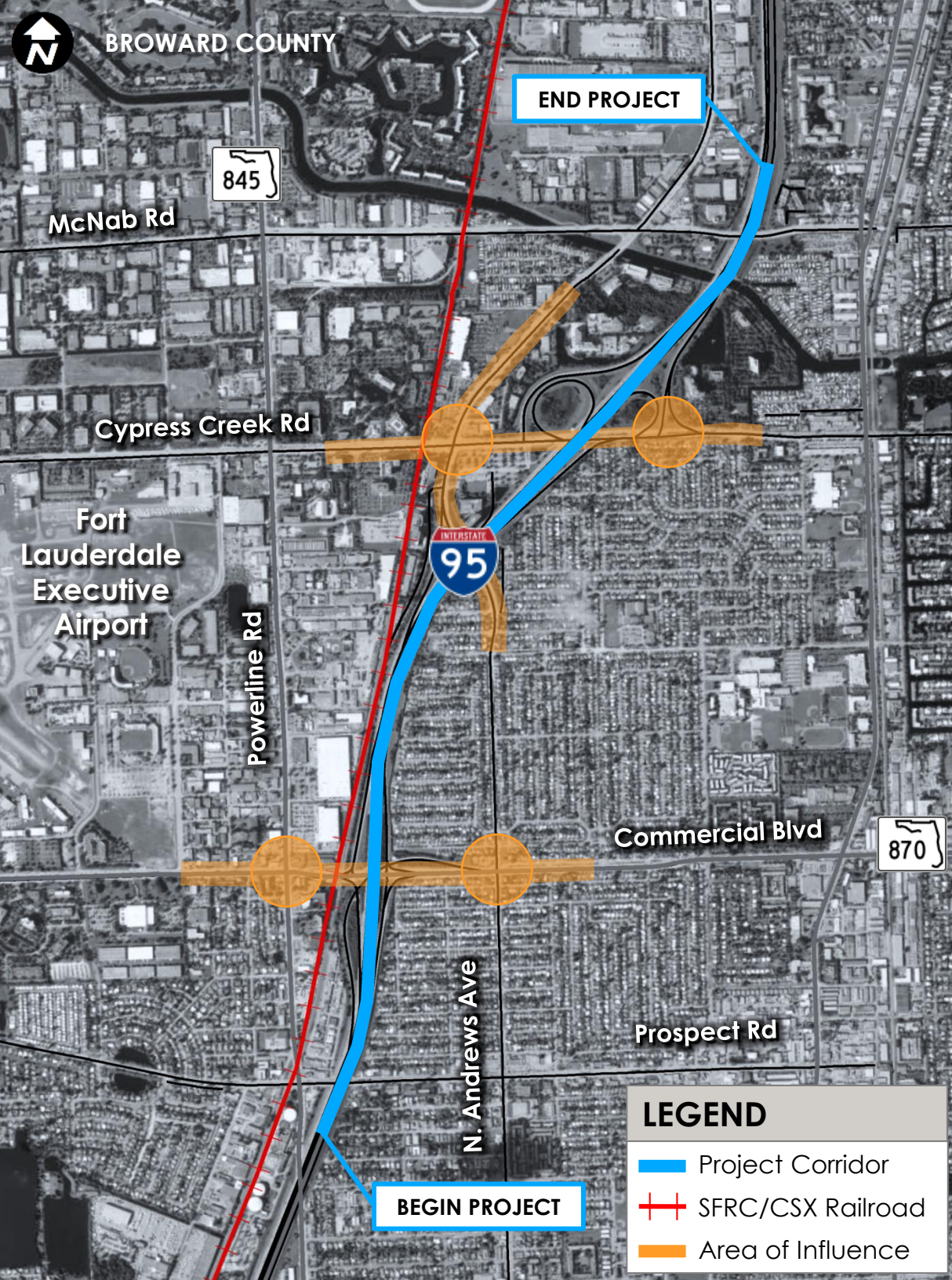
ABOUT THE STUDY AREA

## PROJECT DEVELOPMENT

### ABOUT THE STUDY

### ALTERNATIVES ANALYSIS





# ABOUT THE STUDY

- Review recommendations from FDOT's Interchange Concept Development Reports at each interchange
- Evaluate interchange alternatives, the mainline of I-95 and the project's area of influence
- Evaluate project to meet SIS standards
- Consider a context sensitive system of "Complete Streets"
- Evaluate multimodal accommodations (coordination with existing Park and Ride)
- Assess environmental impacts of the project alternatives
- Improve traffic operations, reduce congestion and increase safety through design year 2040
- Coordinate with existing and on-going projects and planning efforts
- Keep the public involved throughout the study

## PD&E STUDY

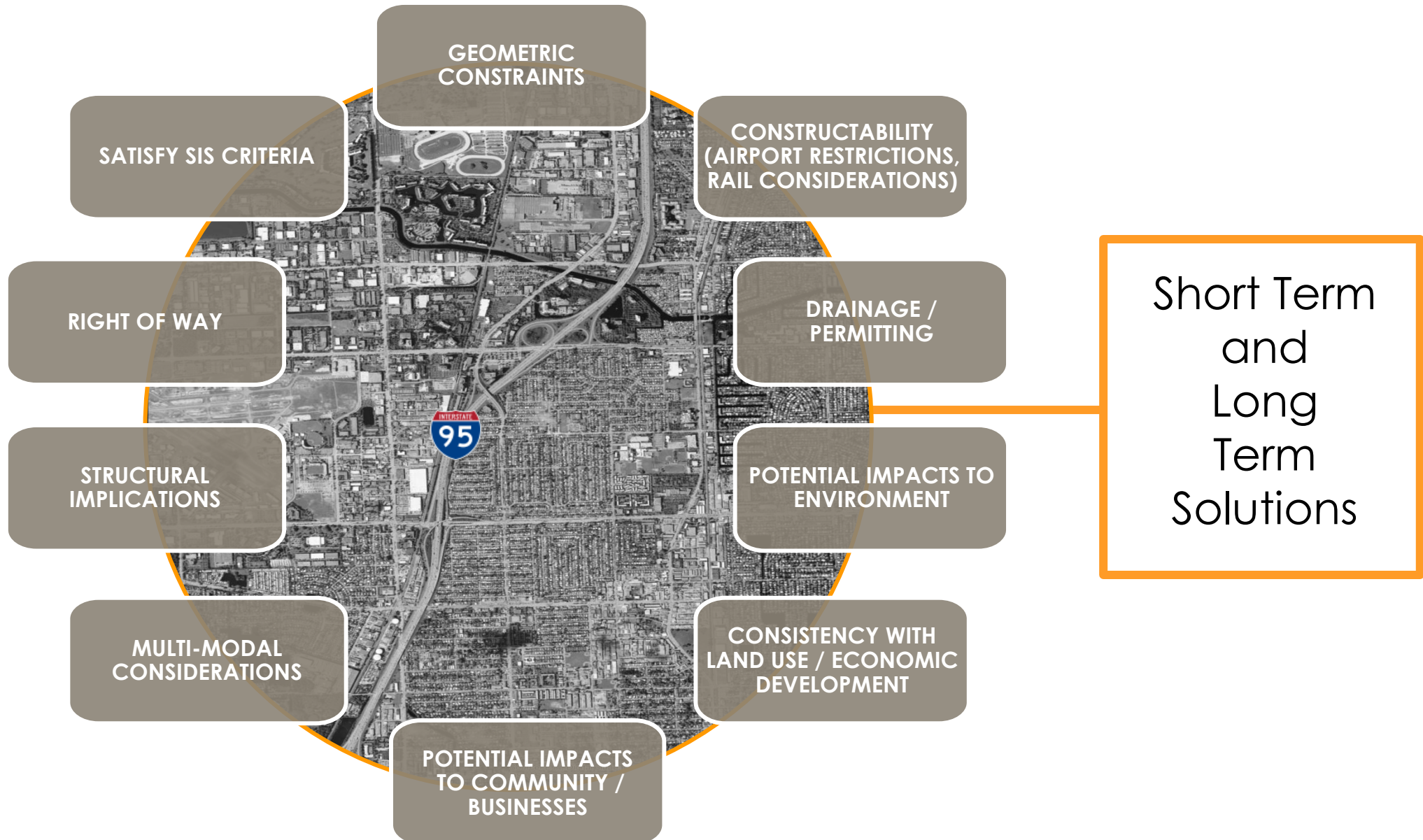
SR 9/I-95 FROM SOUTH OF  
SR 870/COMMERCIAL BOULEVARD TO NORTH  
OF CYPRESS CREEK ROAD  
FM# 435808-1-22-02 / ETDM 14222



# ALTERNATIVE ANALYSIS

## PD&E STUDY

SR 9/I-95 FROM SOUTH OF  
SR 870/COMMERCIAL BOULEVARD  
TO NORTH OF CYPRESS CREEK ROAD  
FM# 435808-1-22-02 / ETDM 14222



## ENVIRONMENTAL

## EFFICIENT TRANSPORTATION DECISION MAKING ENVIRONMENTAL EVALUATION



# EFFICIENT TRANSPORTATION DECISION MAKING (ETDM)

## PD&E STUDY

SR 9/I-95 FROM SOUTH OF  
SR 870/COMMERCIAL BOULEVARD  
TO NORTH OF CYPRESS CREEK ROAD  
FM# 435808-1-22-02 / ETDM 14222

## ENVIRONMENTAL ISSUES

- Enables agencies and the public to provide early input regarding the potential effects of proposed transportation projects
- Class of Action = Categorical Exclusion Type II
- Programming Summary Report available at: <http://etdmpub.fla-etat.org/> (ETDM # 14222)

Alternative #1  
From: S. of SR 870/Commercial Blvd. To: N. of Cypress Creek Road  
Published: 07/21/2015 Reviewed from 04/10/2015 to 05/25/2015)

Social and Economic							Cultural			Natural					Physical					
Land Use Changes	Social	Relocation Potential	Farmlands	Aesthetic Effects	Economic	Mobility	Section 4(f) Potential	Historic and Archaeological Sites	Recreation Areas	Wetlands	Water Quality and Quantity	Floodplains	Wildlife and Habitat	Coastal and Marine	Noise	Air Quality	Contamination	Infrastructure	Navigation	Special Designations
4	2	3	0	2	4	1	2	3	2	2	2	2	2	2	2	2	4	2	0	2

# ENVIRONMENTAL EVALUATION

## PD&E STUDY

SR 9/I-95 FROM SOUTH OF  
SR 870/COMMERCIAL BOULEVARD  
TO NORTH OF CYPRESS CREEK ROAD  
FM# 435808-1-22-02 / ETDM 14222



### NATURAL RESOURCES

- Wetlands and Other Surface Waters
- Threatened and Endangered Species
- No Essential Fish Habitat



### SOCIO-CULTURAL RESOURCES

- Support social and economic development
- North Andrews Garden Neighborhood Park
- Archaeological / Historic Sites



### PHYSICAL ENVIRONMENT

- Noise
- Air Quality
- Contamination

## PUBLIC INVOLVEMENT

GET INVOLVED

VISIT OUR WEBSITE

PROJECT SCHEDULE

PROJECT CONTACTS



# GET INVOLVED

## Attend Public Meetings


- Agency and Public Kick-off Meetings
- Alternatives Public Meeting
- Public Hearing
- Additional opportunities will be provided throughout study

# Provide your input

- Complete a comment form today
- Drop in comment box or
- Mail comments to the address listed on the form
- Provide comments on our website [www.95CommercialtoCypress.com](http://www.95CommercialtoCypress.com)
- **Comments appreciated by June 3, 2016**

SR 90-95 PD&E STUDY

From South of SR 870/Commercial Boulevard to North of Cypress Creek Road  
FHW# 435805-1-22-02 / ETD# 14222

The logo for the Florida Department of Transportation (FDOT) features the letters "FDOT" in a bold, sans-serif font, followed by a stylized graphic of a road winding through hills.

**PROJECT KICK-OFF MEETING**

MAY 24, 2016

**COMMENTS**

(Please Print)

---

---

---

---

---

---

---

---

---

---

---

---

(FOR ADDITIONAL SPACE, PLEASE USE THE BACK OF THIS SHEET)

**Contact Information** (Please Print):

Name: \_\_\_\_\_

Affiliation: \_\_\_\_\_

Address: \_\_\_\_\_

City: \_\_\_\_\_ State: \_\_\_\_\_ Zip: \_\_\_\_\_

E-Mail: \_\_\_\_\_ Phone: \_\_\_\_\_

**Comments are appreciated by June 3, 2016 to be included in the project record.  
Send comments to:**

Anson Sonnett, P.E.  
FDOT Project Manager  
Florida Department of Transportation, District Four  
3400 West Commercial Boulevard  
Fort Lauderdale, Florida 33309  
Telephone: 954-777-4474 / Toll Free: 1-866-336-8435 ext. 4474  
E-mail: [anson.sonnett@fdot.state.fl.us](mailto:anson.sonnett@fdot.state.fl.us)



→ FDOT Website

## SR 9 / I-95 South of Commercial Blvd to North of Cypress Creek Rd Project Development & Environment (PD&E) Study

**District Office**  
Gerry O'Reilly  
District Four Secretary

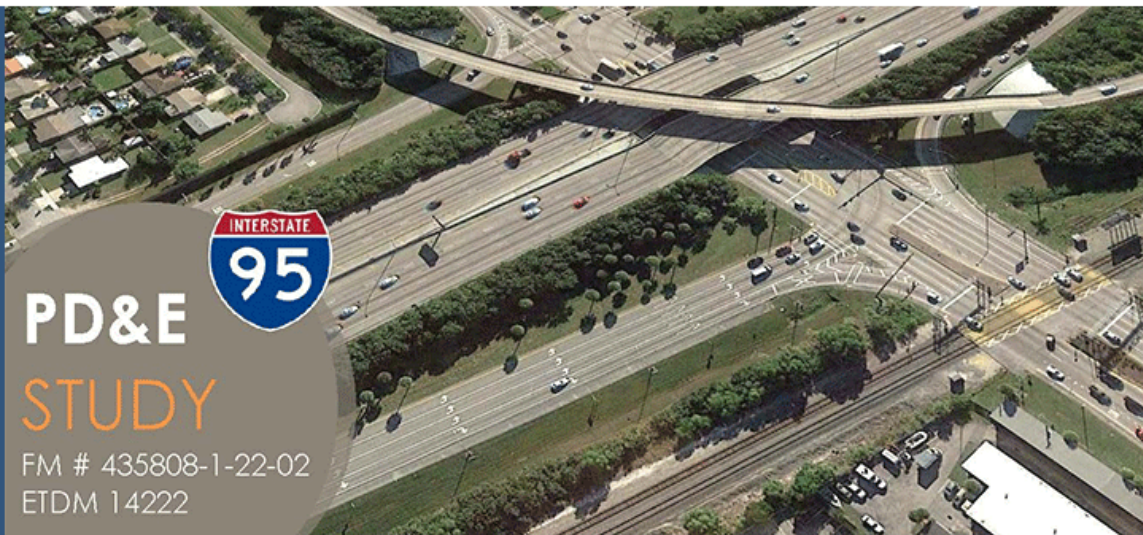
3400 West Commercial  
Blvd  
Ft. Lauderdale, FL 33309

Tel: 954-777-4091  
Fax: 954-777-4191  
[E-Mail Us](#)

**Additional Contacts**  
[Staff Directory](#)

**PD&E  
STUDY**

FM # 435808-1-22-02  
ETDM 14222



→ Project Website

### Study Resources

[About the Study](#)

[Documents & Publications](#)

[Email Updates](#)

[FAQs](#)

[Public Notices](#)

[Schedule](#)

### Welcome

The Florida Department of Transportation (FDOT) is seeking infrastructure solutions for capacity and safety improvement along I-95, the interchanges at Commercial Boulevard and Cypress Creek Road and the adjacent intersections to both interchanges. The project area of influence along I-95 extends from just south of Prospect Road to just north of McNab Road for approximately 2 miles. The project includes an evaluation of the existing roadway and roadside to identify deficiencies or items needing improvement to current FDOT standards.

### Study At-A-Glance

BROWARD COUNTY  
Pompano Beach

END PROJECT



District  
Four

→ Project Directory

**VISIT OUR WEBSITE:**

[www.95CommercialtoCypress.com](http://www.95CommercialtoCypress.com)

# PROJECT SCHEDULE

## PD&E STUDY

SR 9/I-95 FROM SOUTH OF  
SR 870/COMMERCIAL BOULEVARD  
TO NORTH OF CYPRESS CREEK ROAD  
FM# 435808-1-22-02 / ETDM 14222

Activity	2016				2017				2018			
	W	S	S	F	W	S	S	F	W	S	S	F
Begin Study	★											
Public Kickoff Meeting		★										
Elected Officials / Agency Kick-off Meeting		★										
Newsletter				★								
Alternatives Public Meeting					★							
Public Hearing								★				
Study Completed									★			
Public Involvement												
Location and Design Concept Acceptance									★			



## Anson Sonnett, P.E.

Project Manager

Florida Department of Transportation, District Four

3400 West Commercial Boulevard

Fort Lauderdale, FL 33309

Tel (954) 777-4474

Toll Free (866) 336-8435, ext. 4474

**Email: [anson.sonnett@dot.state.fl.us](mailto:anson.sonnett@dot.state.fl.us)**

# QUESTIONS?